

GREEN LAKE CONFERENCE CENTER

2025 Lodging Info and Meal Rates

Contact Guest Services to reserve:
(920) 294-7250 or GuestGroups@glcc.org

HOTELS

We have five hotels/lodges that, when full, can accommodate almost 700 people in 220 rooms.

Because we are a reflective retreat center, our rooms do not have TVs in them. However, we provide TVs in hotel lounges to enjoy a program together, and we have high speed Internet for streaming on your device in your room.

We are certified 'green' by the Wisconsin Department of Tourism and to reduce waste we do not place shampoo and conditioner in rooms. We encourage you to bring your own shampoo, conditioner and hair dryer; we are happy to provide them at the front desk if it is impossible or impractical for you to bring them.



BAUER LODGE (pictured above) has 64 rooms and suites, many with a lake view. Rooms accommodate 1 to 4 people and the two-room suites accommodate 1 to 6 people. Suites have a bedroom and a sitting room with microwave and mini refrigerator. On the 1st floor there is one large meeting room and four smaller meeting rooms. There is a lounge with a fireplace, TV, microwave, and a mini refrigerator on the 2nd and 3rd floors. Complimentary coffee is located in the 2nd and 3rd floor lounges.



KERN LODGE has 57 rooms, many with a lake view. Most rooms accommodate 1 to 4 people each. Family rooms include a queen, a single and a bunk bed and accommodate 5 people each. There is one large meeting room and six smaller meeting rooms on the first floor. There is a lounge with a fireplace, TV, microwave, and mini refrigerator on the 2nd and 3rd floors. Complimentary coffee is located in the 2nd and 3rd floor lounges.

**KERN
LODGE**



HOTELS



ROGER WILLIAMS INN

ROGER WILLIAMS INN was built in 1930 and has 65 rooms, most with a lake view, which accommodate 1 to 4 people each. This historic hotel has a lobby with floor-to-ceiling windows with a lake view. The Penthouse, located on the 5th floor, has spectacular lake views and accommodates 9 people in three rooms. Three meeting rooms are located off the 1st floor lobby.



LAWSON LODGE

LAWSON LODGE has 9 rooms (each with 1 queen bed). A bay window in each room offers a magnificent view of the lake and Memory Lane. Ideal for an individual stay or small retreat; the lakefront meeting room accommodates 18 people comfortably.



HOTEL AND MEAL RATES

HOTELS

Hotel rates are per room/per night, for up to two adults. There is an extra \$15 charge for each additional adult staying in the room. Children and youth, under age 21, in rooms or suites with parents, stay free. There is no charge for cribs used in lieu of beds. Room rates do not include the cost of meals.



HOTELS DEPOSIT:

50% of total charges

HOTELS CANCELLATION POLICY: 30 days prior to arrival, 100% refund. 29 to 3 days prior to arrival, 50% refund. Less than 3 days prior to arrival, no refund.

CHECK-IN: 4:00 p.m. at Kraft Centre

CHECK-OUT: 10:00 a.m.

DISCOUNTED GROUP MEAL RATES THROUGH APRIL 2025

	Adults & Youth	Children age 5-11
Breakfast	\$12.75	\$8.75
Lunch	14.75	10.75
Dinner	<u>17.00</u>	<u>12.00</u>
Total	\$44.50	\$31.50

Children age 4 and under eat free. Rates do not include 5.5% tax.





KRAFT CENTRE

Check-In • Ollie's Place Cafe

Kraft Centre is the hub of activities for our guests! Centrally located between Roger Williams Inn, Lawson, Kern and Bauer Lodges, it has a spacious lobby for checking in and relaxing around a lush garden and skylight.



Ollie's Place Internet cafe is located in-between Bauer Dining Room and the lobby. It's a cozy place to enjoy wireless Internet access.



LAKEFRONT HOUSES

Most of our beautiful lakefront houses have large living rooms which make great gathering places. All lakefront houses (except Oncken-Crum) have private piers to dock a boat or sit and enjoy Green Lake. Houses are equipped with linens, cooking and dining equipment, a charcoal grill and are air conditioned. Two night minimum stay required.



Christian Writing Center
English stone manor house, eight bedrooms, six baths, Wi-Fi and gas fireplace. Cap. 20 (3 queens, 12 singles, 1 trundle bed)



Christian Writing Center Apartment
Cozy apartment behind the Christian Writing Center. One bedroom, one bath, kitchen and living area; Wi-Fi. Cap. 4 (2 queens)



Christian Writing Center dining room



Delmar-Miller House
Seven bedroom Mediterranean-style house with seven and one-half baths, Wi-Fi, large living room with a cathedral ceiling, Clavinova piano and gas fireplace. One room is handicap accessible. Cap. 18 (4 queens, 8 singles, 2 single sofa beds)

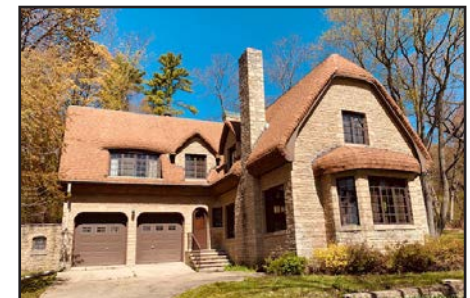


Oncken-Crum House*
Beautifully decorated in a nautical theme, this lakefront house has five bedrooms, four and one-half baths, three-season room and gas fireplace. Cap. 14 (2 queens, 10 singles)

***Closed in winter.**



Robbins Memorial House*
Seven bedrooms, four baths. Spectacular living room with cathedral beamed ceiling and wood burning fireplace, three-season room. Cap. 14 (3 queens, 8 singles)



Stambaugh House*
Charming two-story English-style stone house with four bedrooms, two and one-half baths and a sunken living room with Clavinova piano, gas fireplace and wonderful lake views. Cap. 12 (1 queen, 8 singles, 2 single sofa beds)

Visit glcc.org for floor plans and more pictures!

A discount applies to all houses November 1-April 30.

HOUSES DEPOSIT: 50% of total charges

HOUSES CANCELLATION POLICY: 60 days prior to arrival, 50% refund. Within 60 days of arrival, no refund for full or partial cancellation.

CHECK-IN: 4:00 p.m. at Kraft Centre • **CHECK-OUT:** 10:00 a.m.

FOREST HOUSES

Most of our beautiful forest houses have large living rooms which make great gathering places. Houses are equipped with linens, cooking and dining equipment and a charcoal grill. Two night minimum stay required.



Borden Cottage
Four bedrooms, three baths, Wi-Fi, living room, gas fireplace and large deck. Cap. 10 (2 queens, 2 singles, 2 bunks)



Kimsey-Edwards House
Comfortable, six bedroom house with three and one half baths, living room, gas fireplace and deck. Cap. 14 (2 singles, 4 queens, 1 bunk, 1 trundle bed)



White House*
Early American colonial house. Four bedrooms, three baths, wood burning fireplace and sun porch. Cap. 12 (1 queen, 8 singles, 1 daybed, 1 single hide-a-bed). Closed in winter.



Hobley Cottage
Comfortable, modern three bedroom house with three baths, Wi-Fi, living room, gas fireplace and deck. Cap. 9 (4 queens, 1 single)



Kimsey-Edwards kitchen



White House dining room



Peniston-Wilson Cottage
Comfortable, modern five bedroom house with four baths, Wi-Fi, living room, gas fireplace and deck. Cap. 14 (5 queens, 4 singles)

**Closed in winter.*

Visit glcc.org for floor plans and more pictures!

A discount applies to all houses November 1-April 30.

HOUSES DEPOSIT: 50% of total charges

HOUSES CANCELLATION POLICY: 60 days prior to arrival, 50% refund. Within 60 days of arrival, no refund for full or partial cancellation.

CHECK-IN: 4:00 p.m. at Kraft Centre • **CHECK-OUT:** 10:00 a.m.

CABINS

Cabins are seasonal and must be reserved for a two night minimum. Cabins may be used individually or in clusters. They are near camping areas, are rustic and are not on the lake. They do not have heat or air conditioning. Each cabin includes a bathroom, kitchen and living/dining area. Guests bring their own sheets, blankets, pillows, towels and washcloths. Cabins are ideal for family and group gatherings.

Albert IV ~ Two bedrooms, each with a single bed, a bunk bed, sink and vanity; screened porch.
Cap. 6

Anderson Leaders' Cabin ~ Two bedrooms (three bunk beds and one queen), wood burning fireplace.
Cap. 8

Howel ~ Two bedrooms; one with two singles and one with one bunk and one single; screened porch.
Cap. 5

Killian* ~ Two bedrooms, each with two singles; screened porch. Cap. 4

St. Louis 2 & 3 ~ One room includes living area and bunk beds; screened porch. Cap. 4

St. Louis 1* & 4* ~ Two bedrooms each with two singles; screened porch. Cap. 4

Tompkins ~ Two bedrooms: one with two singles and one with one single and one bunk; screened porch.
Cap. 5

Walbett* ~ Two bedrooms; each bedroom has two singles; screened porch. Cap. 4

Wilson ~ Two bedrooms with one single and one bunk each; screened porch. Cap. 6

*Capacity 5 with the addition of foam mattress, available on request. Guest provides sleeping bag.



Walbett



Howel Kitchen



Tompkins Bedroom

Visit glcc.org for more cabin pictures!

CABINS DEPOSIT: 50% of total charges

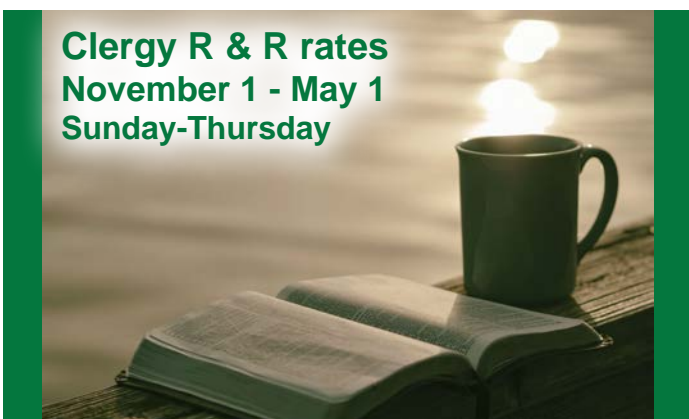
CABINS CANCELLATION POLICY: 60 days prior to arrival, 50% refund. Within 60 days of arrival, no refund for full or partial cancellation.

CHECK-IN: 4:00 p.m. at Kraft Centre
CHECK-OUT: 10:00 a.m.



LONE TREE LODGE

This lodge is located 1/2 mile from the main conference area. There are 17 rooms with twin beds accommodating 39 people. There is a meeting room on the second floor.



**Clergy R & R rates
November 1 - May 1
Sunday-Thursday**

**Pray, listen to God, prepare sermons,
develop vision, unwind, and relax.**

**A room rate of \$50* per night (Sun.-Thurs.)
is offered to pastors Nov. 1-May 1.
Call to reserve: (920) 294-3323.**

*Single or double occupancy, standard hotel room, subject to availability. Meals are not included. Not valid in conjunction with group rates or other discounts.

**CAMPING:
INDIVIDUAL AND GROUP**



All sites are partly to fully shaded. Each circle has a utility building. One tent or one camper is permitted per site.

INDIVIDUAL CAMPING

Anderson Circle (19 sites)

10 w/electricity, water & sewer
9 w/electricity & water

Electrical service at Anderson Circle has 20-, 30- and 50-amp hookups to support larger campers and motor homes, improving reliability. If you use a lot of electricity when you camp, Anderson Circle is for you!

Tower View Circle (12 sites)

6 w/electricity, water & sewer
6 w/electricity only

Anderson and Tower View Circle camping rates:

Electricity or electricity and water -- \$38/night
Electricity, water and sewer -- \$48/night

GROUP CAMPING

(two night minimum stay)

Cedar Grove Group Circle (12 sites)

2 w/electricity, water & sewer; 10 w/electricity only
12 sites in Cedar Grove -- \$456

Shady Oak Group Circle (13 sites)

2 w/electricity, water & sewer
11 w/electricity only
13 sites in Shady Oak -- \$494

CAMPING DEPOSIT:

100% of the total amount at time of reservation.

CAMPING CANCELLATION POLICY:

60 days prior to arrival, 50% refund. Within 60 days of arrival, no refund for full or partial cancellation.

CHECK-IN: 3:00 p.m. CHECK-OUT: 12:00 p.m.

BUNK CABINS AND RED DOOR MEETING SPACE

Bunk Cabins are seasonal and must be reserved for two nights minimum. They are near camping areas, have a dorm feel and are not on the lake. Guests bring their own sheets, blankets, pillows, towels and washcloths. Bunk Cabins are ideal for youth groups.



BLUE DOOR (capacity: 22): Two rooms with five bunk beds in each; three bathrooms and three showers. A third room sleeps two.



BROWN DOOR (capacity: 30): Two rooms sleep twelve and one room sleeps six, all bunk beds; six bathrooms and six showers. A/C



GREEN DOOR (capacity: 24): Two rooms with six bunk beds in each; four bathrooms and four showers. A/C



RED DOOR (capacity: 12): One room with 6 bunk beds; two showers and two bathrooms. The other half of the building is meeting space. A/C



WARNER-KALLMAN (capacity: 23): Two rooms with five bunk beds in each; three bathrooms and three showers. A third room (with bathroom) sleeps three.



Warner-Kallman room



ROBBINS SOUTH HALL

DORMS

Dorms are smoke-free and air conditioned. All have shared bathrooms. Guests bring their own sheets, blankets, towels and washcloths. Handicap accessible rooms available.

ROBBINS NORTH & SOUTH HALLS

Set in the woods 1/2 mile from the main conference area, these dorm-style rooms each have a single bed and a bunk bed. Every two rooms share one bathroom. Each dorm has a gathering room with fireplace. Carroll Youth Center, located between the two dorms, has a large meeting room and three smaller meeting rooms. A low ropes course is located outside the youth center.

